



## Master-PUR H EL

Article Master No.: 000075

PU Suction & Transport Hose, medium duty, very flexible, electroconductive



antistatic



electrically  
conductive



flexible



medium  
heavy



pressure  
resistant

### Product Details

#### Construction / Material

- Type of construction: profile extruded hose with metal spiral
- Spiral Design: made of steel wire
- Material of the spiral: spring steel
- Execution of the wall: made of electrically conductive material, wall thickness between the spirals approx. 1.4 mm
- Material of the wall: Polyester Polyurethane
- Specifications of the wall: surface resistance  $R_0 < 10^3 \text{ Ohm}$

#### Properties

- Specifications of the product: complies with DIN 26057
- Chemical Properties: halogen-free, good resistance to chemicals, good UV resistance, good resistance to oil, good resistance to petrol, good ozone resistance
- Flexibility: flexible
- Weight: medium heavy
- Pressure Resistance: pressure resistant
- Colour: black
- Other: high vacuum and good pressure resistance, configurable as a hose system with digital interface for compatibility with the AMPIUS® app

## Operating Temperature

- Temperature Range: -40 - 90
- short-term maximum temperature: peaks to 125 °C

## Delivery Information

- Delivery, type of production: various nominal widths in standard lengths are available ex-production, individual nominal widths and lengths also ex-stock

## Application Areas

- Areas of application: Bulk & Construction, Chemistry, Surface Technology, Food & Pharma, Plastics

## Customizing Options

- optional item modification (on request): other nominal widths, other colours, with customer-specific imprint

## Article Variants

Extended Article Number	Article number	Nominal Size (DN) mm	Outer diameter mm	Bending radius* mm	Weight kg/m	Operating pressure bar	Negative pressure bar	Max. Production length m	Stock Lengths m
000075:25:x	000075	25	32	46	0.28	4.17	0.92	25.00	/
000075:26:x	000075	26	33	47	0.29	4.16	0.92	25.00	5, 10
000075:32:x	000075	32	41	60	0.39	3.25	0.92	25.00	5, 10, 15
000075:38:x	000075	38	47	69	0.46	3.12	0.82	25.00	5, 10, 15
000075:40:x	000075	40	49	72	0.49	3.00	0.82	25.00	5, 10
000075:45:x	000075	45	55	80	0.55	2.95	0.81	25.00	/
000075:51:x	000075	51	61	87	0.71	2.90	0.79	25.00	5, 10, 15
000075:55:x	000075	55	65	95	0.77	2.75	0.76	25.00	/
000075:60:x	000075	60	70	102	0.84	2.55	0.74	25.00	5, 10
000075:65:x	000075	65	75	112	0.91	2.40	0.66	25.00	5, 10
000075:70:x	000075	70	80	117	0.97	2.25	0.66	25.00	5, 10
000075:76:x	000075	76	87	126	1.06	2.00	0.59	25.00	/
000075:80:x	000075	80	91	132	1.11	2.00	0.59	25.00	5, 10
000075:90:x	000075	90	101	149	1.25	1.65	0.52	25.00	/
000075:102:x	000075	102	112	165	1.48	1.50	0.44	25.00	5, 10
000075:110:x	000075	110	121	179	1.61	1.35	0.44	25.00	/
000075:115:x	000075	115	126	186	1.68	1.35	0.31	25.00	/
000075:120:x	000075	120	131	194	1.75	1.30	0.31	25.00	/
000075:127:x	000075	127	139	205	1.91	1.30	0.31	25.00	/
000075:130:x	000075	130	141	209	1.96	1.30	0.31	25.00	/
000075:140:x	000075	140	151	224	2.11	1.05	0.25	25.00	/
000075:152:x	000075	152	163	242	2.29	1.05	0.25	25.00	/
000075:160:x	000075	160	171	255	2.51	0.90	0.25	25.00	/
000075:170:x	000075	170	181	270	2.67	0.90	0.18	25.00	/
000075:180:x	000075	180	191	285	2.82	0.75	0.18	25.00	/
000075:203:x	000075	203	215	321	3.50	0.75	0.18	25.00	/
000075:225:x	000075	225	237	353	3.65	0.60	0.12	25.00	/
000075:250:x	000075	250	259	385	3.84	0.60	0.12	25.00	/

Extended Article Number	Article number	Nominal Size (DN) mm	Outer diameter mm	Bending radius* mm	Weight kg/m	Operating pressure bar	Negative pressure bar	Max. Production length m	Stock Lengths m
000075:254:x	000075	254	263	390	3.84	0.60	0.12	25.00	/
000075:275:x	000075	275	288	426	4.22	0.45	0.12	25.00	/
000075:280:x	000075	280	293	435	4.30	0.45	0.12	25.00	/
000075:300:x	000075	300	313	465	4.94	0.45	0.12	20.00	/
000075:315:x	000075	315	328	488	5.19	0.45	0.12	20.00	/
000075:325:x	000075	325	338	503	5.35	0.45	0.12	20.00	/
000075:350:x	000075	350	363	540	6.96	0.45	0.12	20.00	/
000075:375:x	000075	375	388	580	7.45	0.30	0.07	20.00	/
000075:400:x	000075	400	413	615	7.95	0.30	0.07	20.00	/
000075:450:x	000075	450	463	690	8.94	0.30	0.07	20.00	/
000075:500:x	000075	500	513	765	9.93	0.30	0.07	20.00	/

All data refer to a medium and ambient temperature of +20°C.  
 Specification of the bending radius related to the inside of the hose bend  
 Subject to technical changes and colour deviations

## Delivery Variants

Available in other lengths, other nominal diameters, with customer-specific customer-specific imprint.

## Disposal instructions

After use, the product must be disposed of in accordance with the legal regulations applicable in the user's region (in Germany in accordance with the applicable Waste Catalogue Ordinance (AVV)).

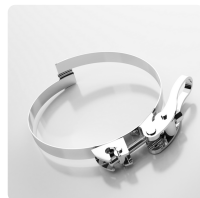
## Possible Connection Elements



**Master-Grip Hose Clamp, screwable**  
 Special clamp for fastening light and medium-weight, right-handed spiral hoses such as Flamex B-se, Flamex B-F se, Master-PUR Trivolution, Master-PVC and Master-SANTO



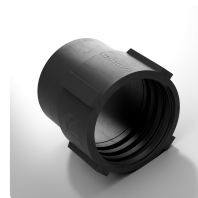
**Master-Grip Hose Clamp, screwable, Steel quality W4, stainless steel 1.4301**  
 Special clamp for fastening light and medium-weight, right-handed spiral hoses such as Flamex B-se, Flamex B-F se, Master-PUR Trivolution, Master-PVC and Master-SANTO



**Master-Grip Quick-Fix Clamp**  
 Special clamp for fastening light and medium-weight, right-hand spiral hoses such as Flamex B-se, Flamex B-F se, Master-PUR Trivolution, Master-PVC and Master-SANTO



**Hose connector Sheet steel connector**  
 Sheet steel connector for extending, connecting and joining light to medium-weight hoses



**Combiflex PU Screw Cuff EL**  
 PU end fitting for Master-PUR L/H and Master-PVC L/H hoses, electrically conductive



**Combiflex PU Threaded Sockets**  
 PU threaded connector for all Master-PUR L, Master-PUR H and Master-PUR HX hose types, based on DIN ISO 228

### Individual consultation

We offer consultation by  
phone:  
+49 209 97077-112

Product requests via  
[masterflex.de/en](https://www.masterflex.de/en)

### Address Headquarters

Masterflex SE  
Willy-Brandt-Allee 300  
45981 Gelsenkirchen

