

Master-SIL 2

Article Master No.: 000495

Medium and high temperature hose for temperatures up to +250 °C, two layers



hydrolysis resistant



microbe resistant



compressible



very flexible



light



pressure resistant

Product Details

Construction / Material

- Type of construction: single or multi-layer spiral hose made of vulcanized fabric strips
- Material of the spiral: spring steel
- Execution of the wall: double-layered, coating in silicone
- Material of the wall: glass fibre fabric
- Material of the inner layer: glass fabric
- Material of the outer layer: glass fabric
- Design of the cord: designed as twin cord
- Material of the cord: glass fibre yarn

Properties

- Chemical Properties: good resistance to chemicals
- Mechanical Properties: kink-proof
- Flexibility: very flexible
- Weight: light
- Pressure Resistance: pressure resistant
- Colour: red

Operating Temperature

- Temperature Range: -70 - 250
- short-term maximum temperature: short-term -85 °C to 300 °C

Delivery Information

- Delivery, type of production: various nominal widths in standard lengths are available ex-production, individual nominal widths and lengths also ex-stock

Application Areas

- Areas of application: Automotive, Plant & Mechanical Engineering, Industry, Aerospace technology, Ventilation & Air-conditioning, Bulk & Construction, Sea & Rail transport, Chemistry, Food & Pharma, Plastics, Printing & Paper, Vehicle Construction, Metal & Toolmaking

Customizing Options

- optional item modification (on request): other lengths, other nominal widths, with spiral-free end sleeves, with plastic spiral

Article Variants

| Extended Article Number | Article number | Nominal Size (DN) mm | Bending radius* mm | Weight kg/m | Operating pressure bar | Negative pressure bar | Max. Production length m | Stock Lengths m |
|-------------------------|----------------|-------------------------|-----------------------|----------------|---------------------------|--------------------------|-----------------------------|--------------------|
| 000495:13:x | 000495 | 13 | 15 | 0.16 | 2.80 | 0.64 | 4.00 | 4 |
| 000495:19:x | 000495 | 19 | 15 | 0.19 | 2.80 | 0.64 | 4.00 | 4 |
| 000495:25:x | 000495 | 25 | 15 | 0.22 | 2.80 | 0.64 | 4.00 | 4 |
| 000495:30:x | 000495 | 30 | 15 | 0.25 | 2.80 | 0.64 | 4.00 | 4 |
| 000495:32:x | 000495 | 32 | 16 | 0.26 | 2.80 | 0.64 | 4.00 | 4 |
| 000495:38:x | 000495 | 38 | 18 | 0.31 | 2.60 | 0.59 | 4.00 | 4 |
| 000495:41:x | 000495 | 41 | 19 | 0.32 | 2.60 | 0.59 | 4.00 | 4 |
| 000495:42:x | 000495 | 42 | 19 | 0.32 | 2.60 | 0.59 | 4.00 | 4 |
| 000495:44:x | 000495 | 44 | 21 | 0.34 | 2.60 | 0.55 | 4.00 | 4 |
| 000495:45:x | 000495 | 45 | 21 | 0.34 | 2.60 | 0.55 | 4.00 | 4 |
| 000495:51:x | 000495 | 51 | 24 | 0.36 | 2.60 | 0.51 | 4.00 | 4 |
| 000495:55:x | 000495 | 55 | 27 | 0.42 | 2.50 | 0.48 | 4.00 | / |
| 000495:57:x | 000495 | 57 | 28 | 0.43 | 2.50 | 0.48 | 4.00 | 4 |
| 000495:60:x | 000495 | 60 | 31 | 0.47 | 2.40 | 0.47 | 4.00 | 4 |
| 000495:63:x | 000495 | 63 | 31 | 0.49 | 2.40 | 0.47 | 4.00 | 4 |
| 000495:64:x | 000495 | 64 | 31 | 0.49 | 2.40 | 0.47 | 4.00 | 4 |
| 000495:65:x | 000495 | 65 | 31 | 0.50 | 2.40 | 0.47 | 4.00 | 4 |
| 000495:70:x | 000495 | 70 | 35 | 0.53 | 2.30 | 0.43 | 4.00 | 4 |
| 000495:76:x | 000495 | 76 | 38 | 0.58 | 2.20 | 0.42 | 4.00 | 4 |
| 000495:80:x | 000495 | 80 | 40 | 0.62 | 2.10 | 0.41 | 4.00 | 4 |
| 000495:83:x | 000495 | 83 | 42 | 0.64 | 2.10 | 0.40 | 4.00 | 4 |
| 000495:90:x | 000495 | 90 | 44 | 0.69 | 2.00 | 0.39 | 4.00 | 4 |
| 000495:95:x | 000495 | 95 | 48 | 0.73 | 1.90 | 0.36 | 4.00 | 4 |
| 000495:102:x | 000495 | 102 | 52 | 0.77 | 1.90 | 0.34 | 4.00 | 4 |
| 000495:108:x | 000495 | 108 | 55 | 0.83 | 1.70 | 0.30 | 4.00 | / |
| 000495:110:x | 000495 | 110 | 57 | 0.85 | 1.70 | 0.29 | 4.00 | / |
| 000495:114:x | 000495 | 114 | 57 | 0.89 | 1.60 | 0.28 | 4.00 | 4 |

| Extended Article Number | Article number | Nominal Size (DN) mm | Bending radius* mm | Weight kg/m | Operating pressure bar | Negative pressure bar | Max. Production length m | Stock Lengths m |
|-------------------------|----------------|-------------------------|-----------------------|----------------|---------------------------|--------------------------|-----------------------------|--------------------|
| 000495:120:x | 000495 | 120 | 61 | 0.94 | 1.60 | 0.28 | 4.00 | 4 |
| 000495:127:x | 000495 | 127 | 64 | 1.00 | 1.40 | 0.25 | 4.00 | 4 |
| 000495:130:x | 000495 | 130 | 65 | 1.02 | 1.30 | 0.23 | 4.00 | 4 |
| 000495:140:x | 000495 | 140 | 70 | 1.11 | 1.30 | 0.19 | 4.00 | 4 |
| 000495:152:x | 000495 | 152 | 75 | 1.20 | 1.20 | 0.17 | 4.00 | 4 |
| 000495:160:x | 000495 | 160 | 80 | 1.28 | 1.10 | 0.15 | 4.00 | 4 |
| 000495:165:x | 000495 | 165 | 83 | 1.32 | 1.00 | 0.14 | 4.00 | 4 |
| 000495:180:x | 000495 | 180 | 90 | 1.48 | 1.00 | 0.12 | 4.00 | 4 |
| 000495:203:x | 000495 | 203 | 101 | 1.65 | 0.70 | 0.09 | 4.00 | 4 |
| 000495:229:x | 000495 | 229 | 125 | 1.90 | 0.60 | 0.08 | 4.00 | / |
| 000495:254:x | 000495 | 254 | 150 | 2.14 | 0.50 | 0.07 | 4.00 | 4 |
| 000495:305:x | 000495 | 305 | 210 | 2.58 | 0.30 | 0.04 | 4.00 | 4 |

All data refer to a medium and ambient temperature of +20°C.
Specification of the bending radius related to the inside of the hose bend
Subject to technical changes and colour deviations

Delivery Variants

Available in other lengths, other nominal diameters, with customer-specific customer-specific imprint.

Disposal instructions

After use, the product must be disposed of in accordance with the legal regulations applicable in the user's region (in Germany in accordance with the applicable Waste Catalogue Ordinance (AVV)).

Possible Connection Elements



Hose connector
Sheet steel connector for extending, connecting and joining light to medium-weight hoses



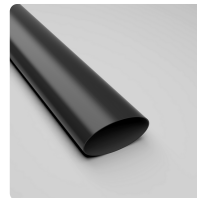
Hose Reducer, symmetrical
Hose reducer for extending, connecting and joining light to medium weight hoses



Hose Clamp with Worm-Gear
Standard clamp for fastening light hose types to connecting pieces on mobile and stationary installations



Hose Clamp with Worm-Gear, Steel quality W4, stainless steel 1.4301
Standard clamp for fastening light hose types to connecting pieces on mobile and stationary installations



Heat Shrink Cuff
Heat shrink sleeve for easy connection and sealing of hoses

Individual consultation

We offer consultation by phone:
+49 209 97077-112

Product requests via
masterflex.de/en

Address Headquarters

Masterflex SE
Willy-Brandt-Allee 300
45981 Gelsenkirchen

